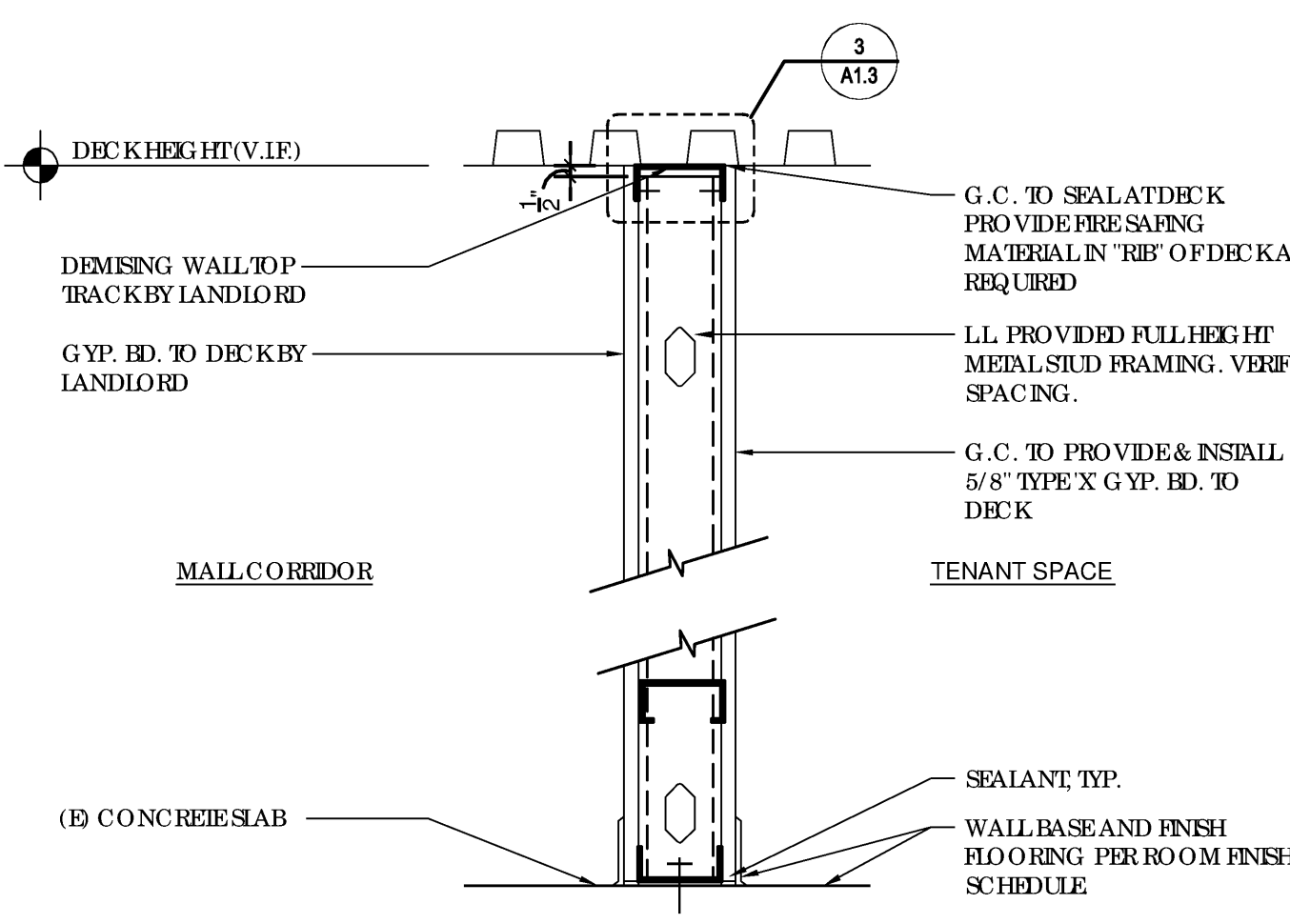
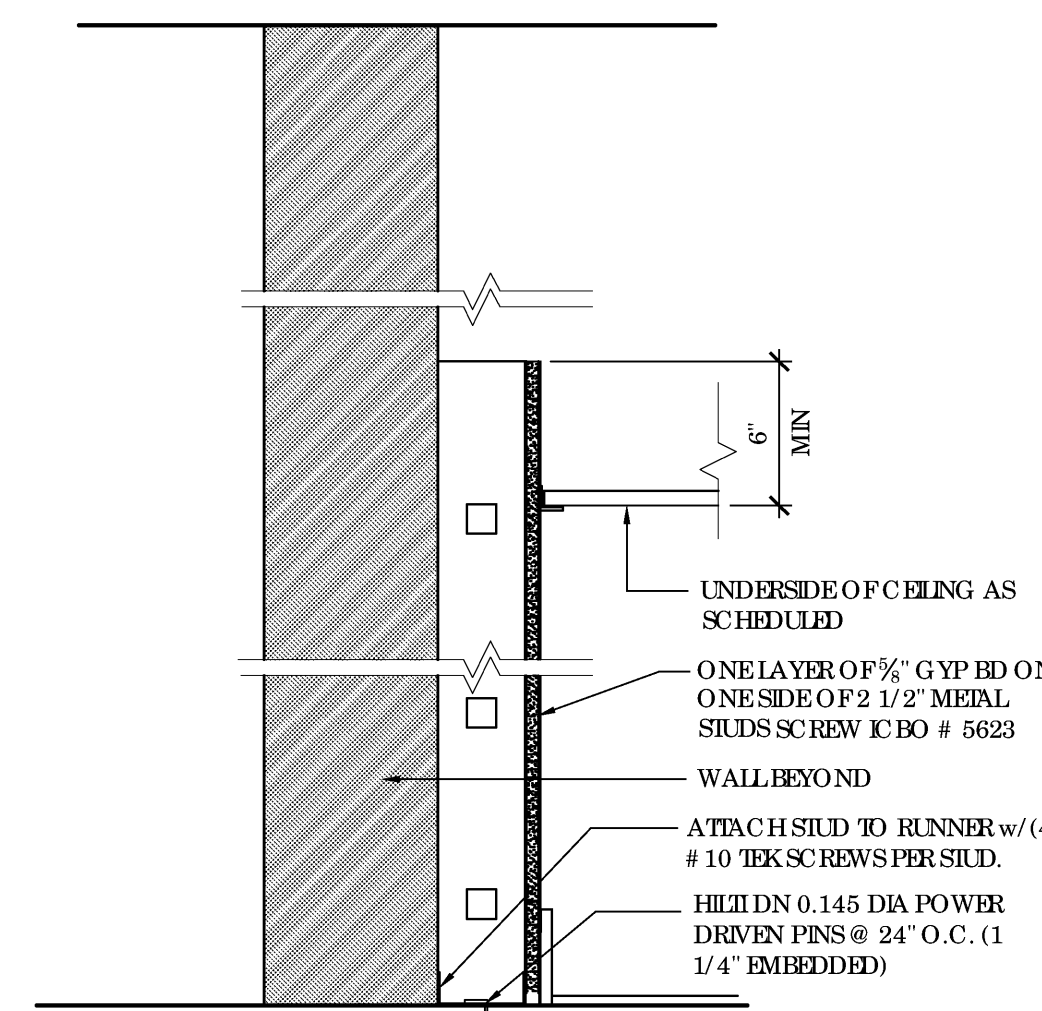


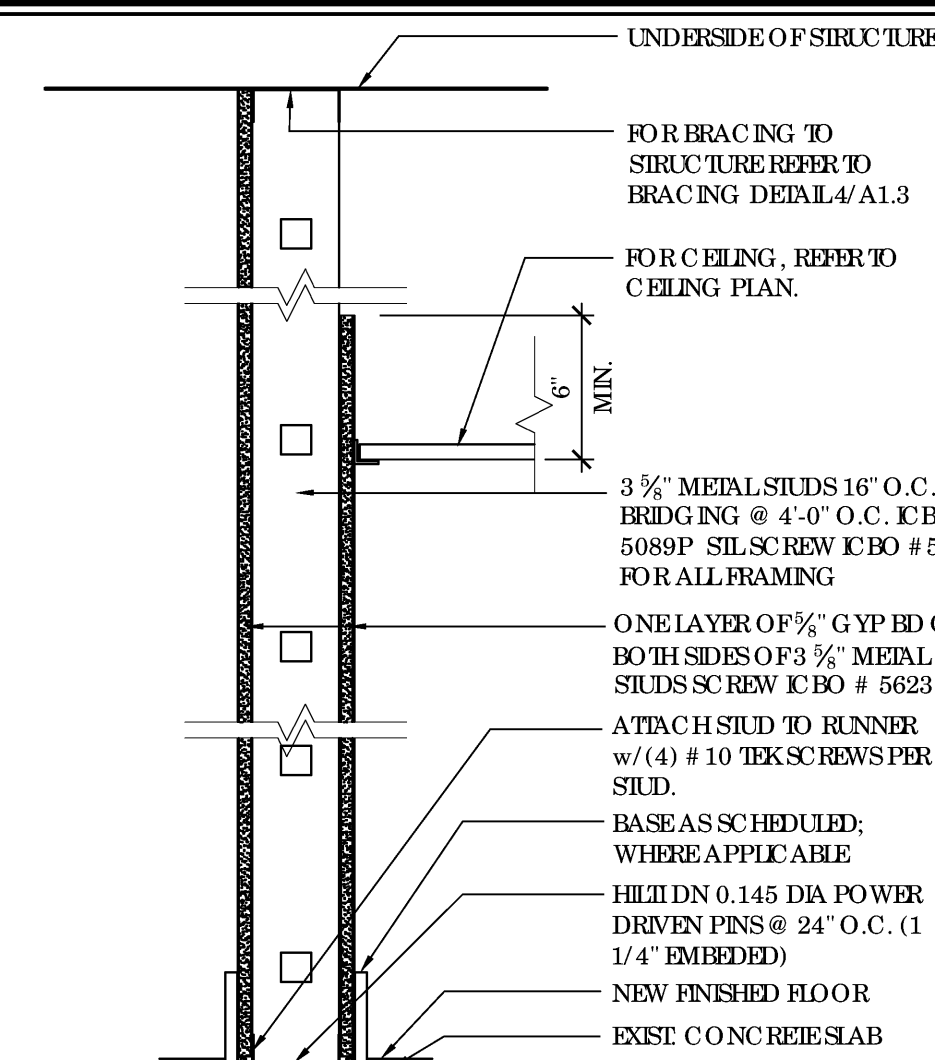
1 (N) DEMISING WALL (1-HR RATED)
UL DESIGN # U465 1-HR RATED. SEAL ALL PENETRATIONS PER UL REQUIREMENTS



2 (N) DEMISING WALL (1-HR RATED)
UL DESIGN # U465 1-HR RATED. SEAL ALL PENETRATIONS PER UL REQUIREMENTS

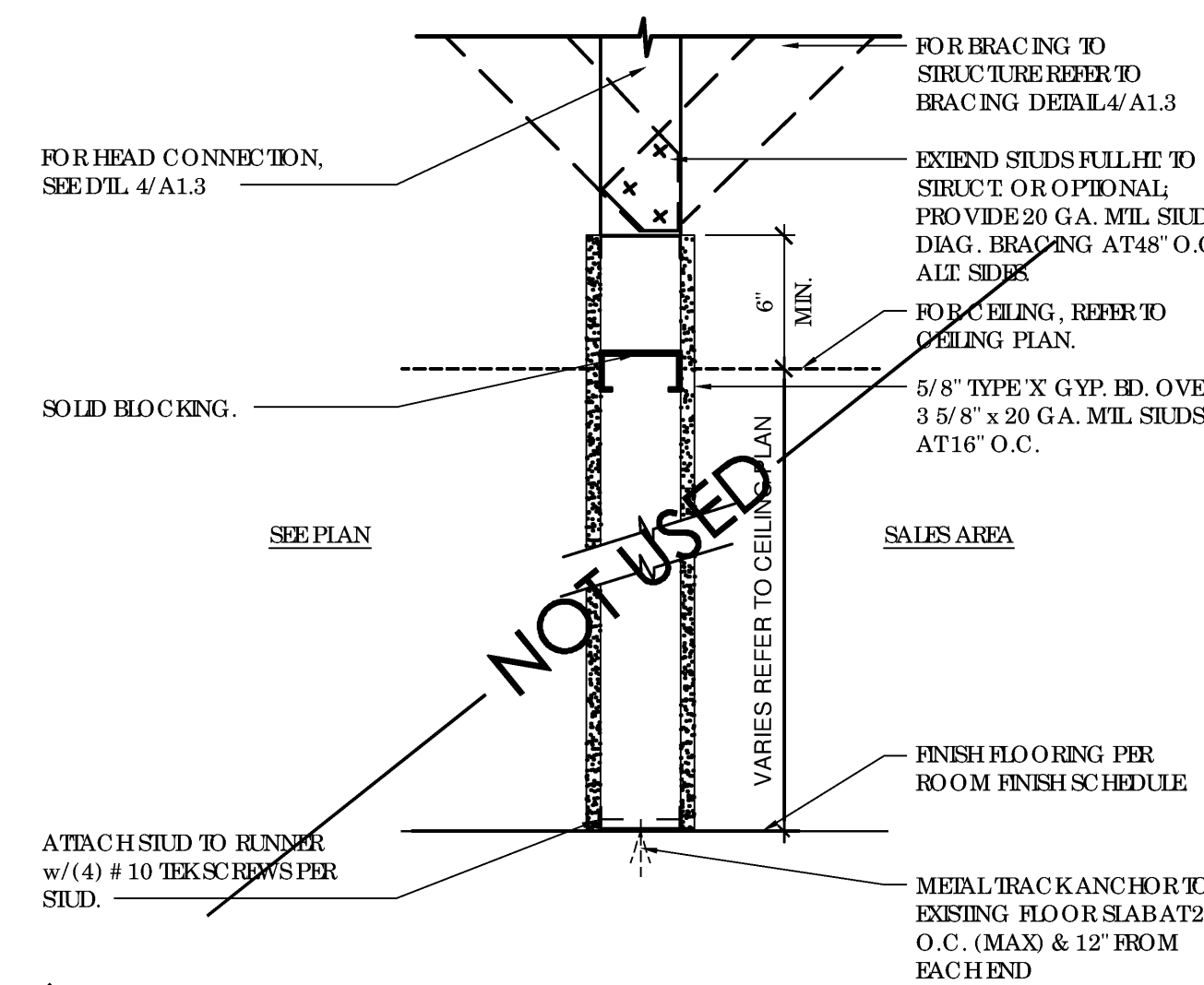


3 TYP. FURRING DETAIL

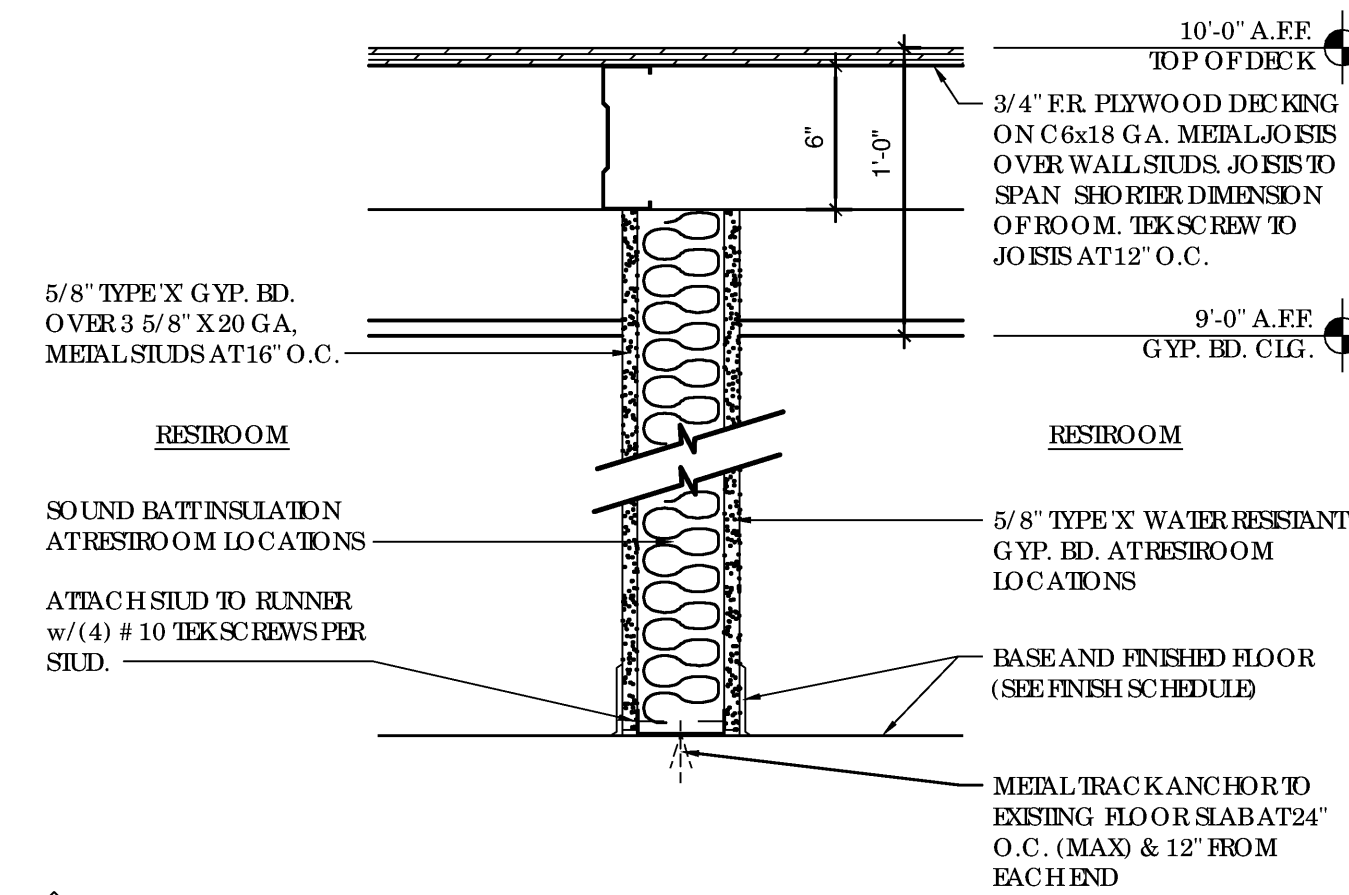


4 TYP. WALL PARTITION

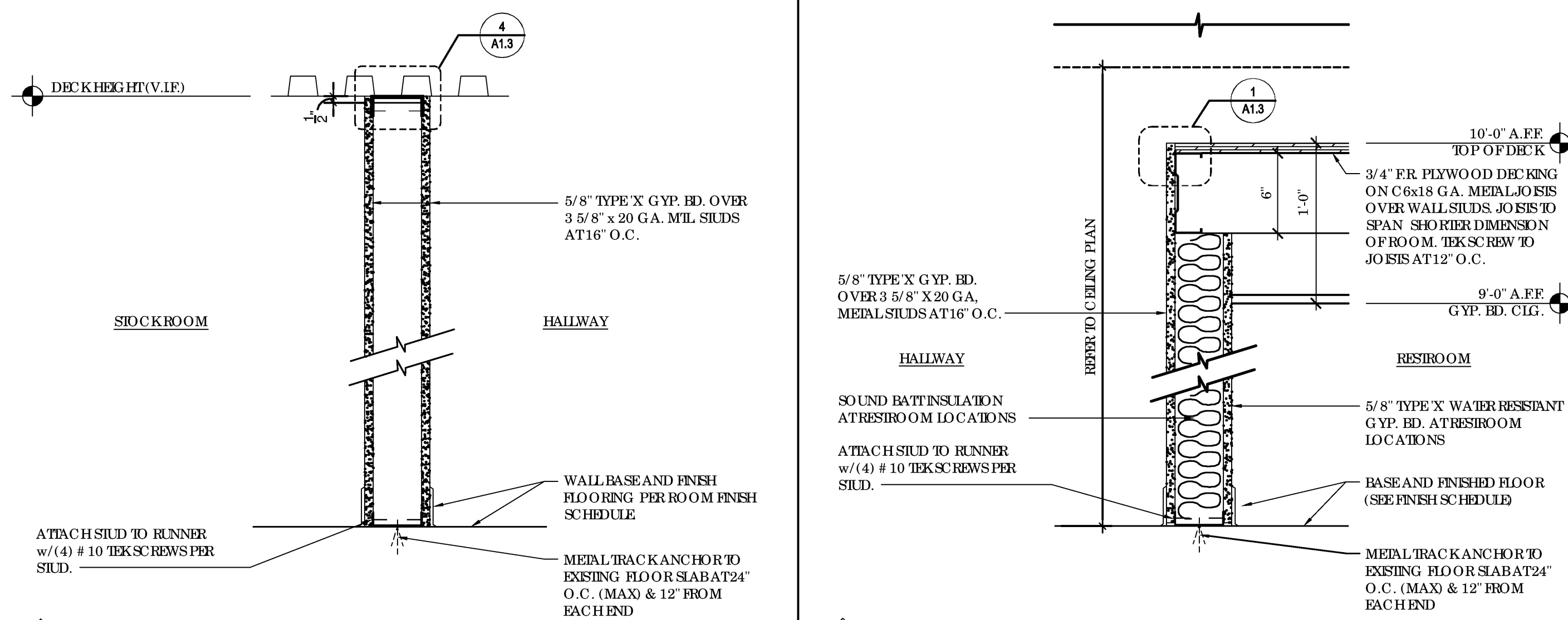
4A SIMILAR TO PARTITION TYPE '4' EXCEPT GYP. ED. ON ONE SIDE



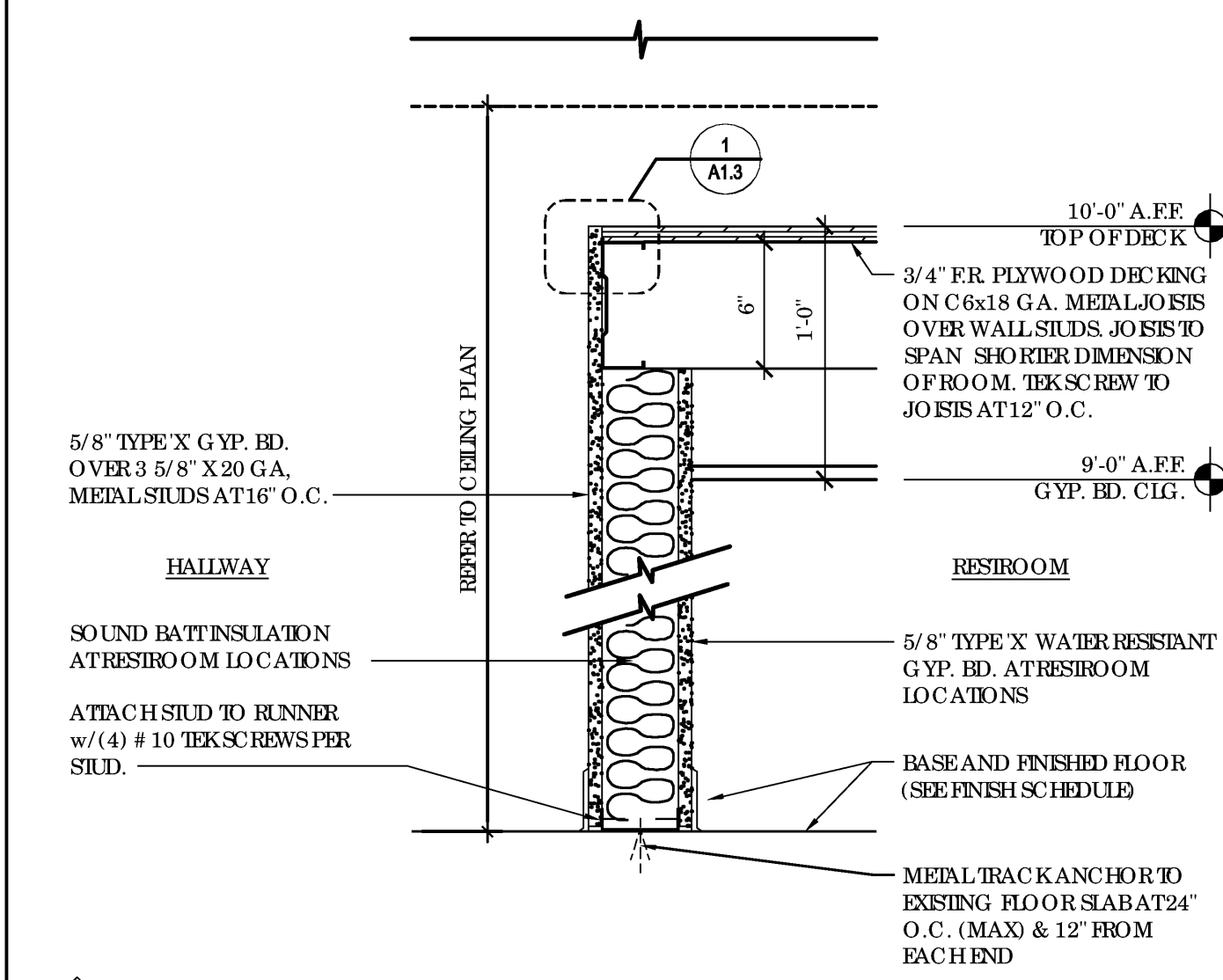
5 WALLPARTITION @ WALLPANEL



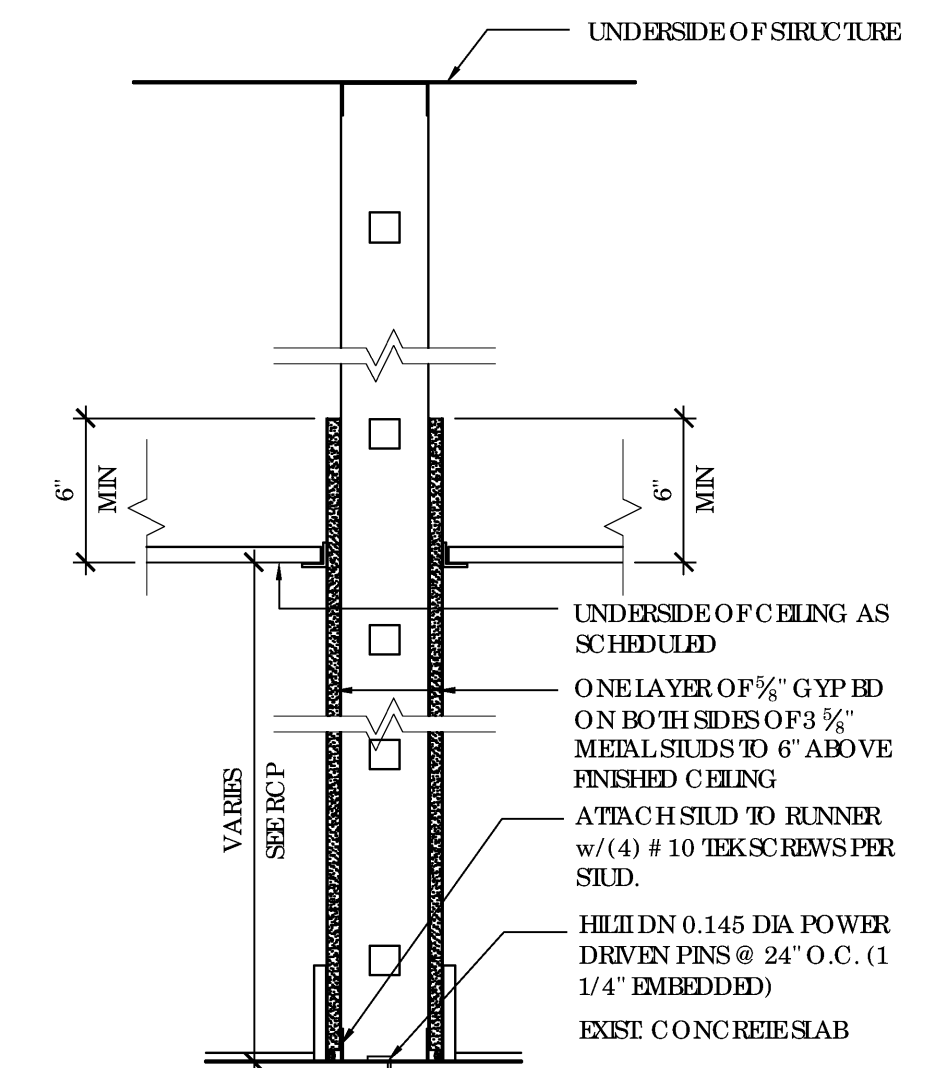
6 WALL PARTITION UNDER DECK



7 WALL PARTITION TO DECK

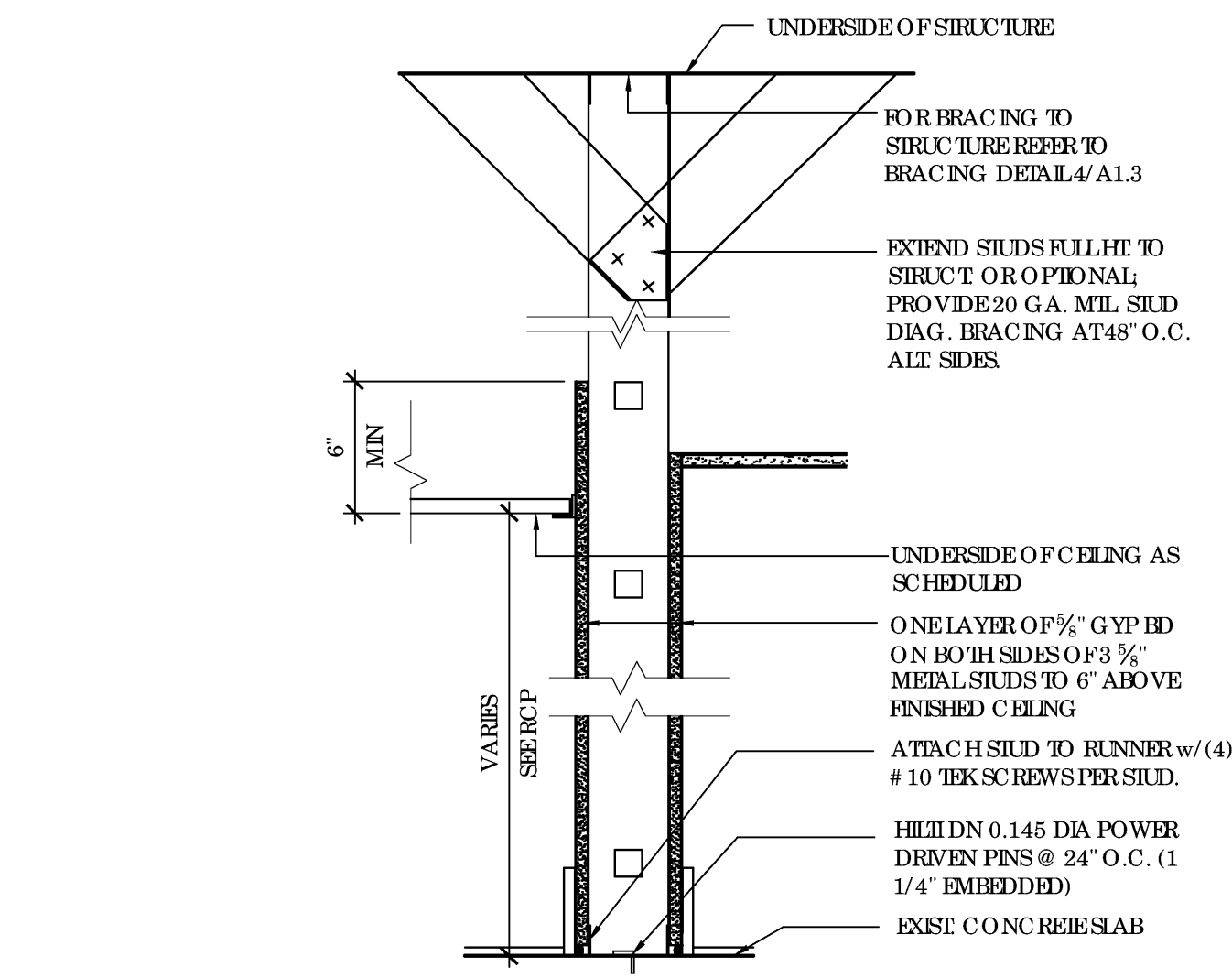


WALL PARTITION WITH DECK



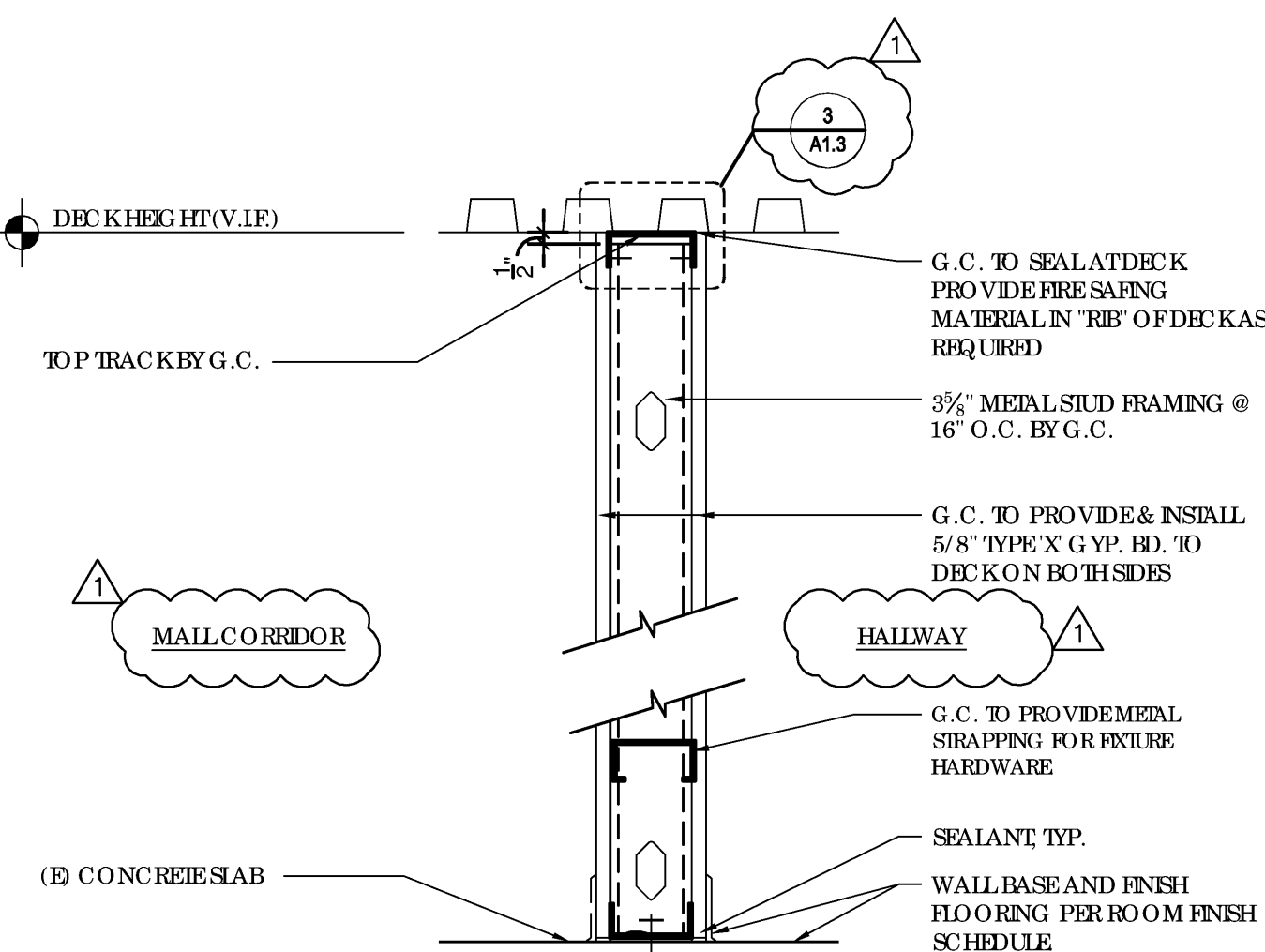
WALL PARTITION

9A SIMILAR TO PARTITION TYPE '9' EXCEPT GYP. BD. ON ONE SIDE



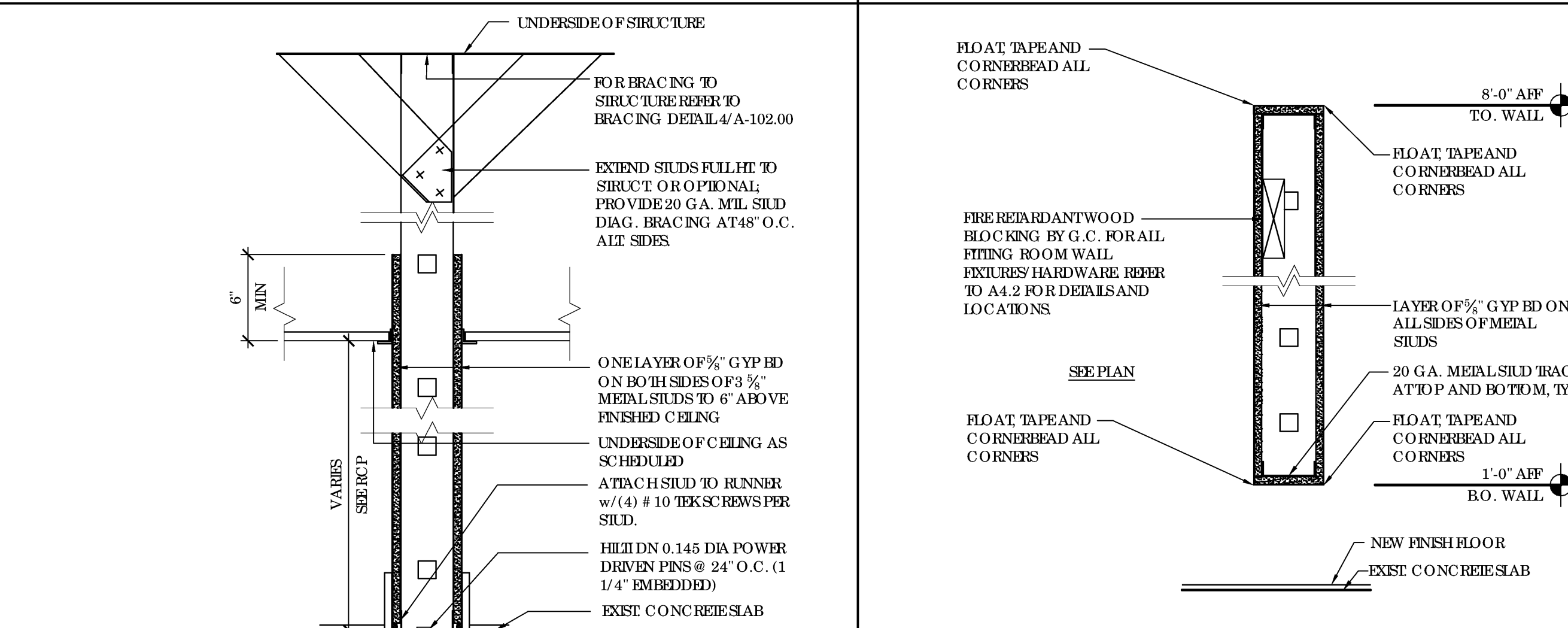
10 WALL AT STO REFRO NT DISPLAY

10A SIMILAR TO PARTITION TYPE '10' EXCEPT GYP. BD. ON SOFT SIDE ONLY



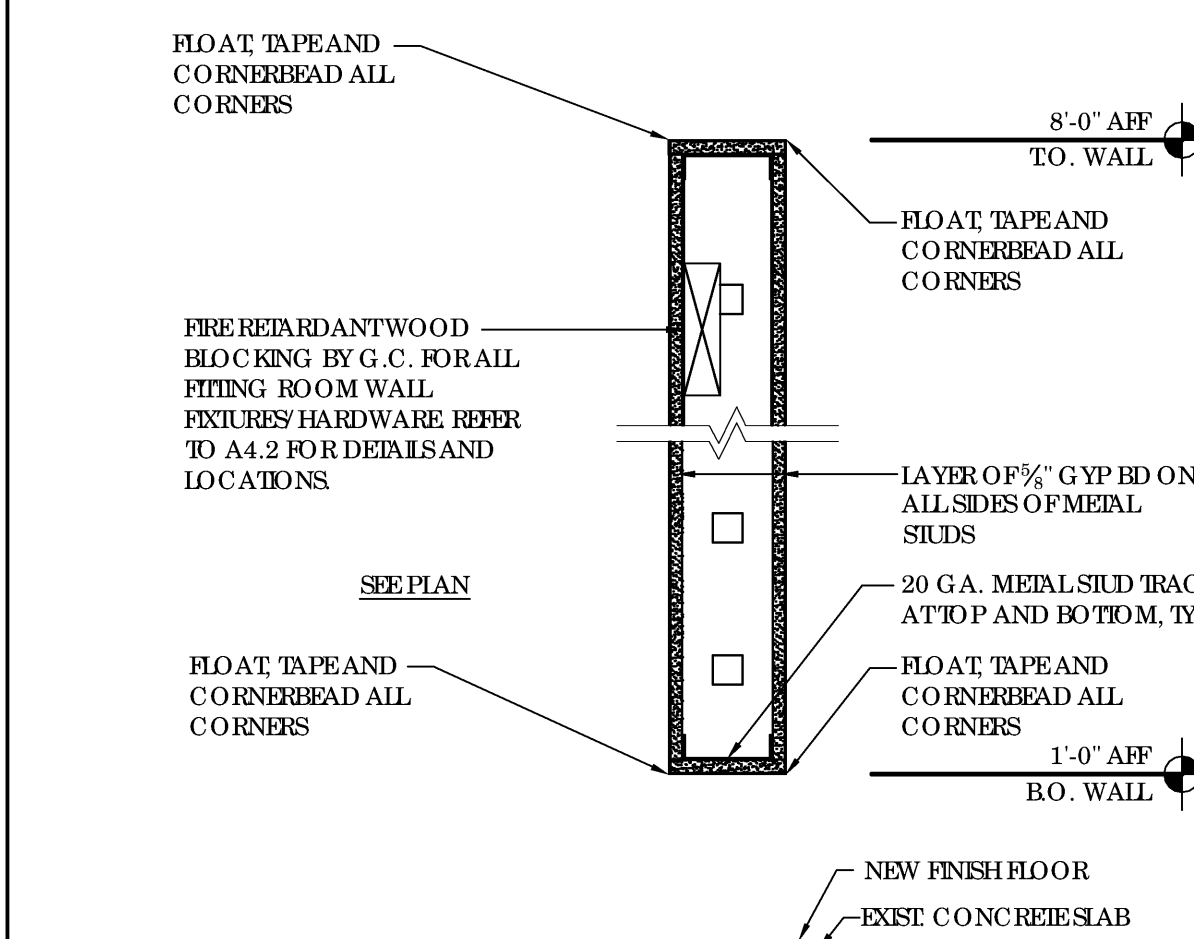
11 1-HR RATED WALL

UL DESIGN # U465 1-HR RATED. SEAL ALL PENETRATIONS PER UL REQUIREMENTS

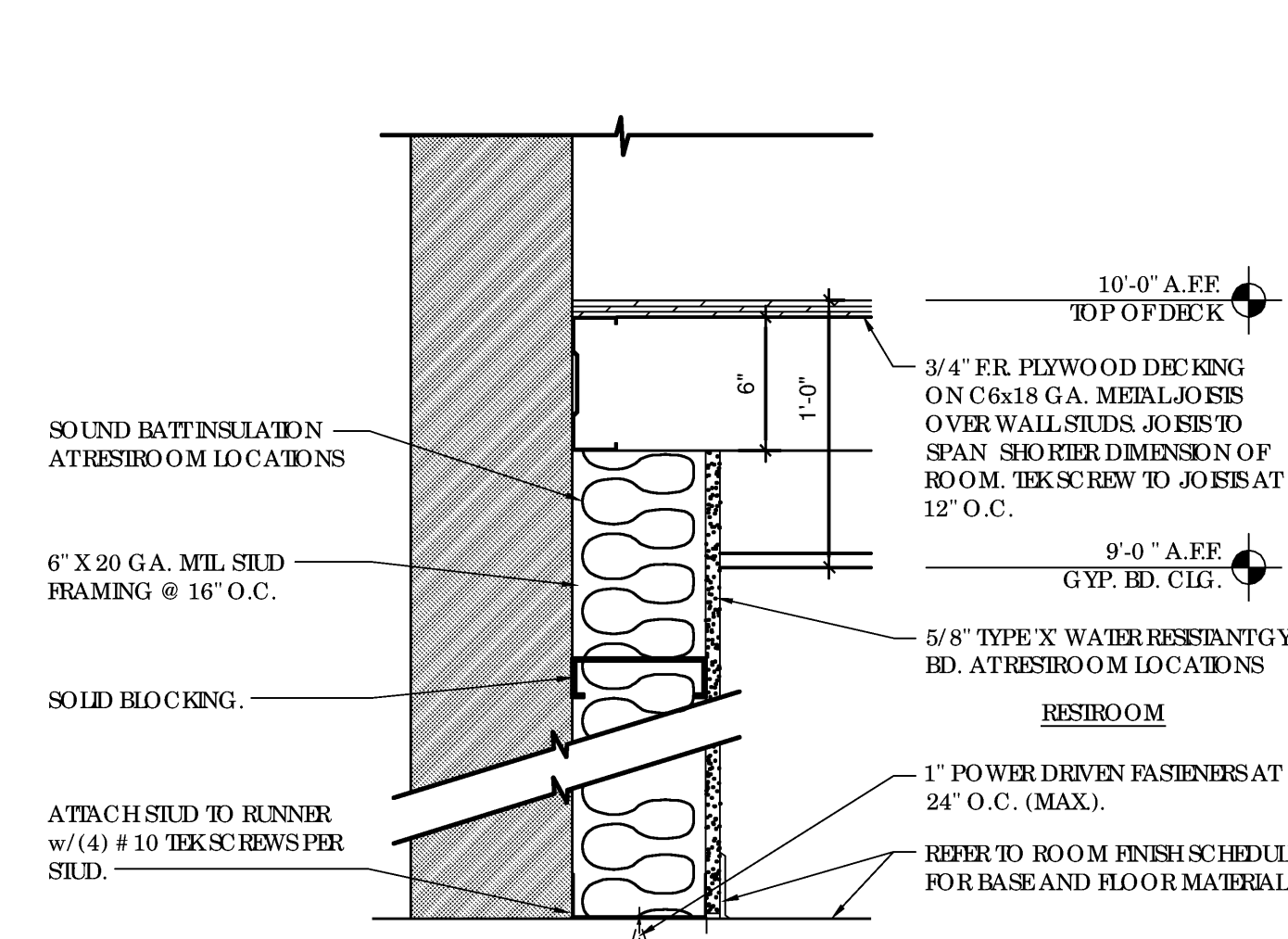


12 WALL PARTITION @ FITTING ROOM

2A SIMILAR TO PARTITION TYPE '12' EXCEPT GYP. BD. ON ONE SIDE



12 WALL PARTITION @ FITTING ROOM



14 PLUMBING CHASE WALL

GENERAL NOTES

1. ALL METAL STUD FRAMING TO CONFORM TO IABR 25332
2. PENETRATION WITH HESSTAYS INTO PUMP, SINK, RESTROOMS AND DRAINING FOUNTAIN.
3. OPENING IN EXISTENCE FLOORS OTHER THAN UNPROTECTED EXTERIOR OPENINGS SHALL BE LIMITED TO THOSE NECESSARY FOR ENTRY ACCESS TO THE ENCLOSURE FROM NON-LOCALLY OCCUPIED SPACES AND FOR THE EGRESS FROM THE ENCLOSURE.
4. PENETRATIONS INTO AND OPENINGS THROUGH AN EXISTENCE FLOOR ARE PROHIBITED EXCEPT FOR REQS USED EXISTING EQUIPMENT AND DUCTWORK NECESSARY FOR INDEPENDENT PRESERVATION, SPINNIER, FLOOR, STANDPIPE, ELECTRICAL RACKS AND FOR FIRE FIGHTING EQUIPMENT, CABLES AND SYSTEMS, AND FOR THE PROTECTION OF THE FLOOR AND THE REINFORCING AT THE STAIR BOX NOT BEING 16 SQ. IN. SUCH PENETRATIONS SHALL BE PROHIBITED IN ACCORDANCE WITH CIRC 712. THERE SHALL BE NO PENETRATIONS OR COMMUNICATION AN OPENINGS, WHETHER PROTECTED OR NOT, BETWEEN ADJACENT FLOORS.

PARTITION TOP ATTACHMENT

BUILDING MATERIAL	2 FASTENERS
CONCRETE SLAB	2 HLT DN378 DRIVE PINS
METAL DECK	2 # 12-14 X 1" HWN TRAXX/2
METAL DECK W/ CONCRETE	1-3/4" X 3/16" DIA TAPCON (2) ANCHORS IN SUB DRILLED HOLES
METAL DECK W/ LIGHTWEIGHT FILL	2 # 12-14 X 1" HWN TRAXX/2 IN SUB DRILLED HOLES

PARTITION TOP ATTACHMENT AT FURRED WALL

BUILDING MATERIAL	2 FASTENERS	2 FASTENERS
BRICK	1-3/4" X 9/16" DIA TYPICON ANCHORS AT 24" O.C. TO	BRACING NOT REQUIRED
CMU	ALIGN WITH STUDS	
CONCRETE	# 12-14 X 1-1/4" TO EACH STUD	
3-6/8" MILD STEEL W/ GYP HD		3" X 9" X 20 GA. C/P ANGLE @ 0-3"
6" MILD STEEL W/ GYP HD		2-8/8-18 X 1/2" HW THRS 2
WOOD	# 10 X 2 1/2" TO EACH WALL STUD IN SUBMERGED HOLES	# 10 X 2 1/2" TO EACH WALL STUD IN SUBMERGED HOLES

1 PARTITION TYPES